



Glendale Industrial Park  
2 Raymond Drive, Unit EF  
Havertown, PA 19083  
Phone: (610) 825-5040

Website: [www.merionpump.com](http://www.merionpump.com)

Proudly Representing the Following Quality **PLUMBING** Products:

## Centrifugal Pumps

**GRUNDFOS**

[us.grundfos.com](http://us.grundfos.com)



- UP UPS TP TPE Circulating Pumps
- CR CRE Multistage Centrifugal Pumps
- E-Pumps ~ integral variable frequency drives
- MAGNA3 energy saving Domestic Hot Water pumps



## Pressure Boost Systems

**GRUNDFOS**

Hydro MPC boosterpaQ

UL Listed Pumping Systems

Safe Drinking Water

- NSF61/UL372 Approvals

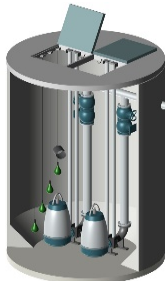
[www.BoosterpaQ.com](http://www.BoosterpaQ.com)



## Sewage Lift Pumping

**GRUNDFOS**

SL1 / SLV / SEG



- Packaged Lift Stations
- Submersible solids handling and grinder pumps

## Un-fired Water Heaters

[www.DHTnet.com](http://www.DHTnet.com)

- Semi-Instantaneous Indirect-fired



**DIVERSIFIED**  
HEAT TRANSFER, INC

- SUPERPLATE - Compact, Boiler Water-fired, Plate HX



**SUPERTHERM**



- SUPERTHERM - Compact, Steam-fired, Coil in Shell/Tank

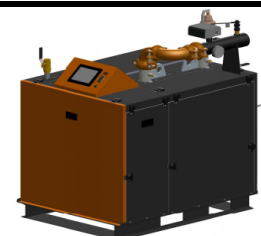
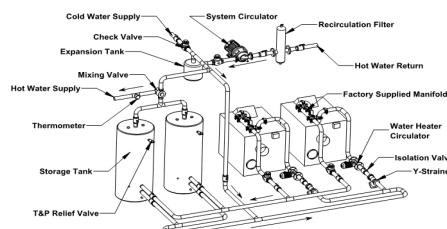
## Sump Water Ejection

**GRUNDFOS**

Unilift AP - PIP

- Submersible effluent and dewatering pumps
- Sump basins and covers, pump lift-out systems

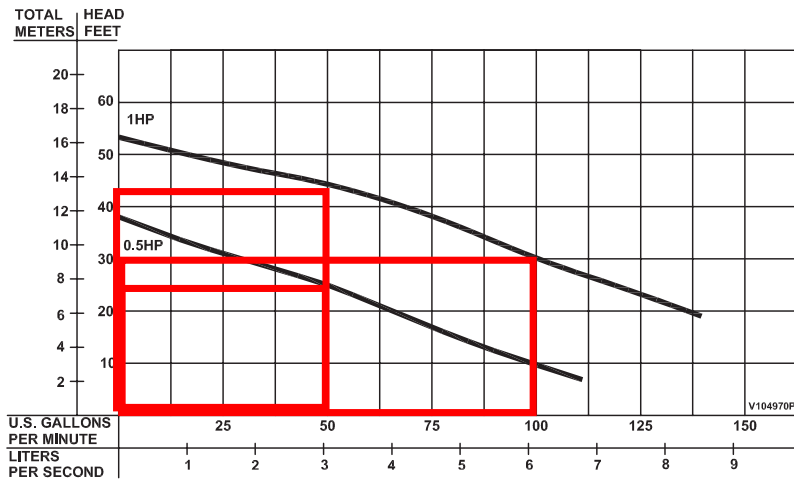
## Gas-fired, Hi-Efficiency, Condensing Water Heaters



## Commercial Sump, Sewage & Effluent Pumps GRUNDFOS **PIP**



### GRUNDFOS **PIP** Technical Data – 1/2 HP to 1 HP



50 GPM @ 25 feet TDH, 1/2 HP  
50 GPM @ 43 feet TDH, 1 HP  
100 GPM @ 30 feet TDH, 1 HP

## Commercial Wastewater Control Panels GRUNDFOS **SPARTAN**

**OIL LOGIC**

### APPLICATIONS

- Simplex Elevator Shaft Drainage

### Key Features and Benefits

- Combination Oil/Water Level Sensor
- Type 4X Polycarbonate Enclosure
- Visual/Audible Alarm Indication with Silencing
- Simple Relay Logic Controls
- 10mm Pump run Toggle Switches
- 10mm Neon Indicator Lights
- Incoming Service Main Disconnect
- General Alarm Remote Monitoring Dry Contact
- Wire Labels
- Easy to access Field Terminals
- Optional Dead Front Construction
- Optional UL 508a Listing



Oil Logic Sensor

The Spartan Oil Logic Series is an economical control panel specifically designed for oil/water interface sump pump applications, such as hydraulic elevator sumps, transformer vaults and any sump pump application where the presence of oil needs to be detected. The UL 508a Listed control panel utilizes a combination oil/water level sensor that allows pump operation in the presence of water and prevents pump operation in the presence of oil. In addition to typical motor controls, the system also provides both a high level alarm and oil present alarm with auxiliary alarm contacts for remote indication.



Spartan, Simplex, Oil Logic  
includes Sensor